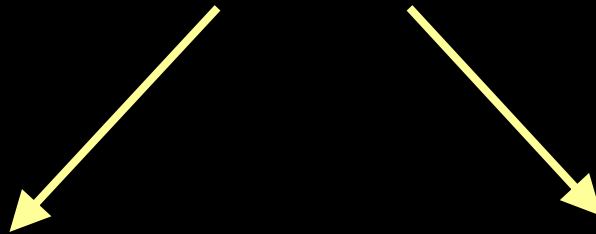


LENHO INICIAL E TARDIO

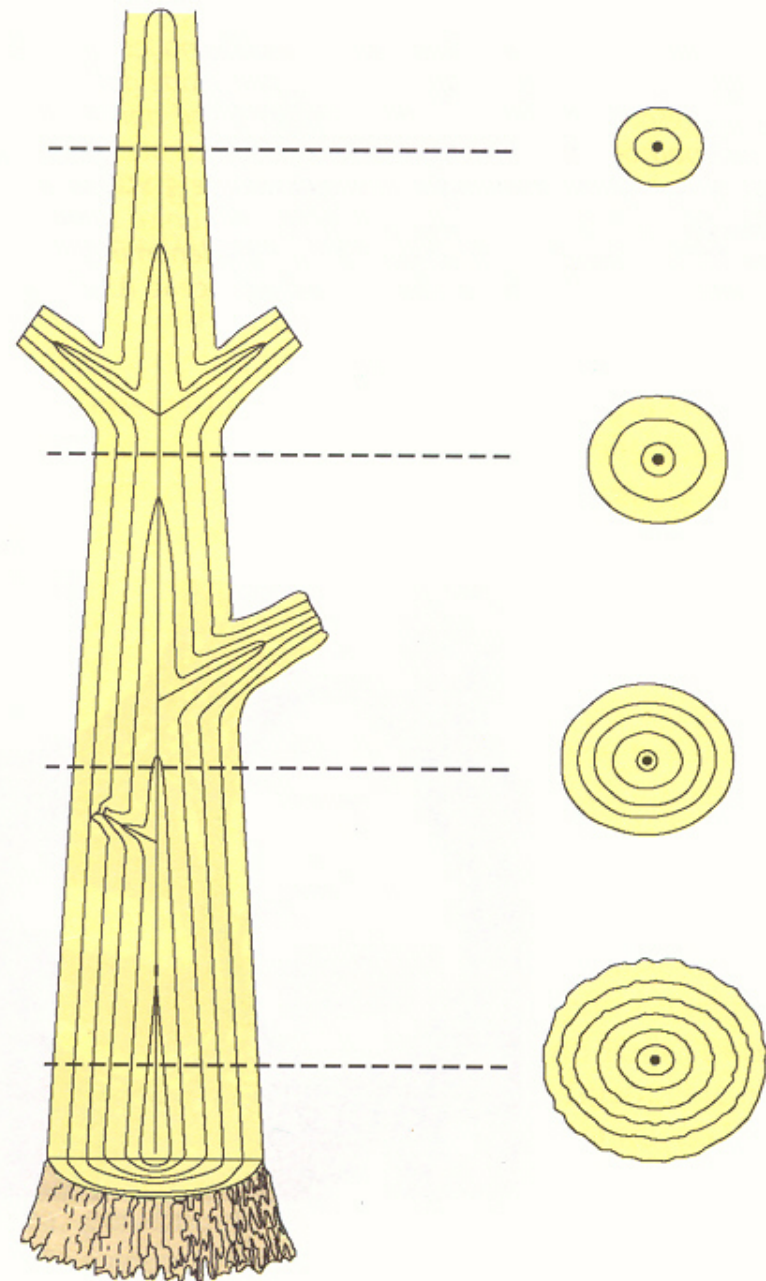
ANÉIS OU CAMADAS DE CRESCIMENTO



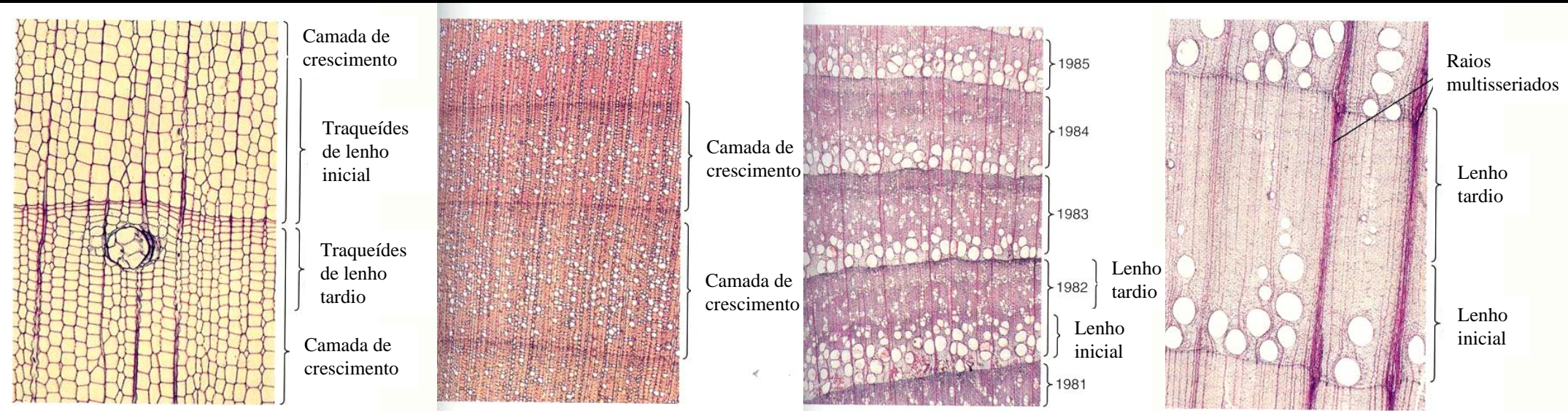
LENHO INICIAL

LENHO TARDIO

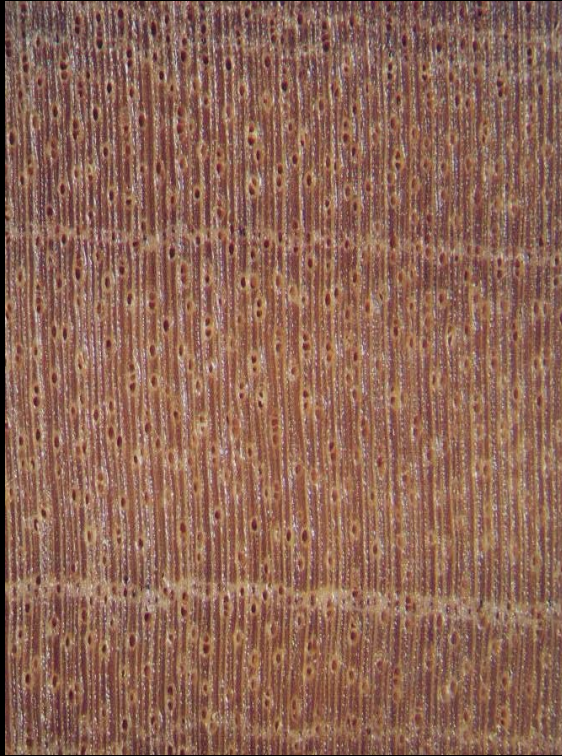
**CAMADAS DE
CRESCIMENTO
AO LONGO DO
TRONCO DE
UMA ÁRVORE**



VARIAÇÕES NAS CAMADAS DE CRESCIMENTO



ALGUMAS ESPÉCIES DE REGIÕES TROPICAIS



Copaíba

(*Copaifera langsdorffii*)

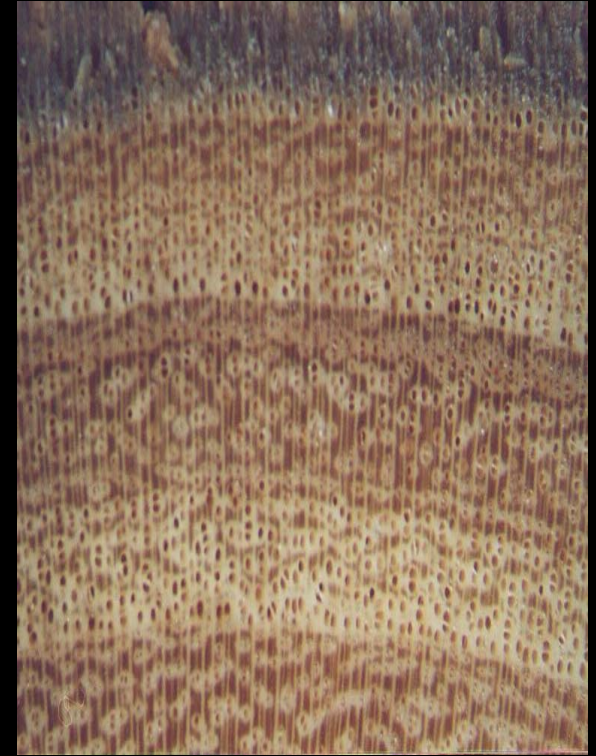
Leguminosae-Caesalpinoideae



Cedro

(*Cedrela fissilis*)

Meliaceae



Tamanqueira

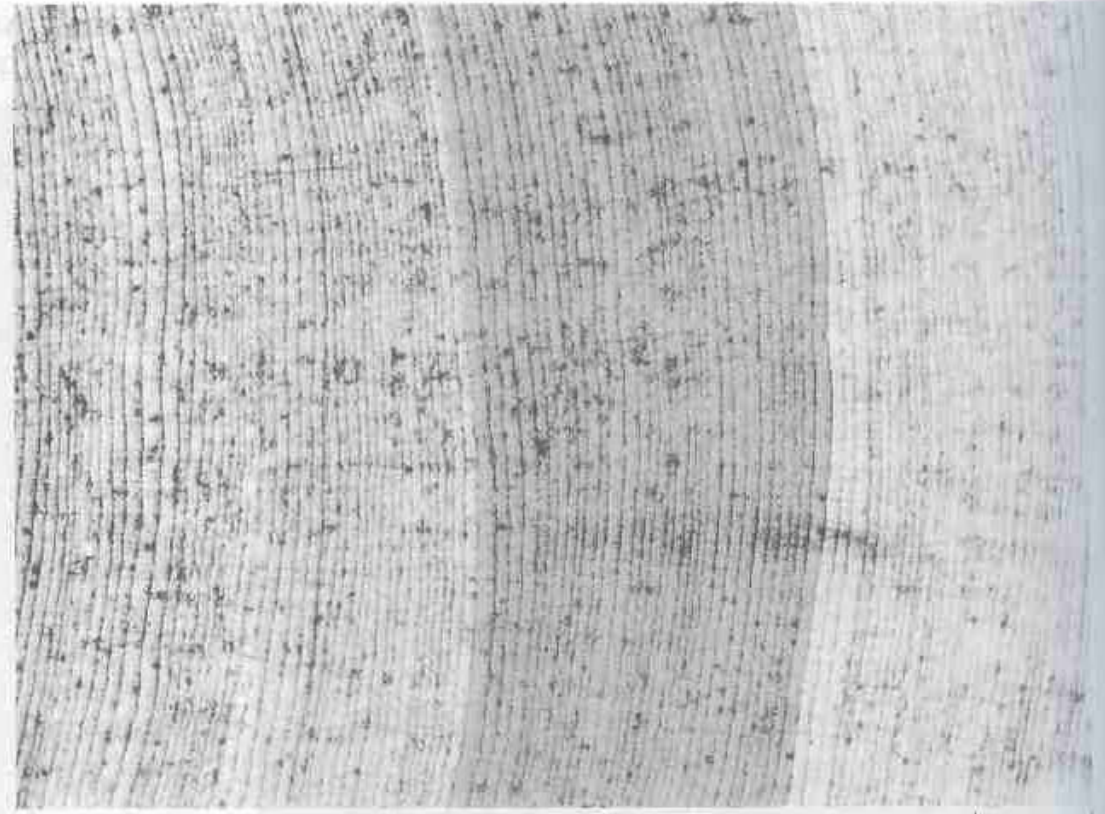
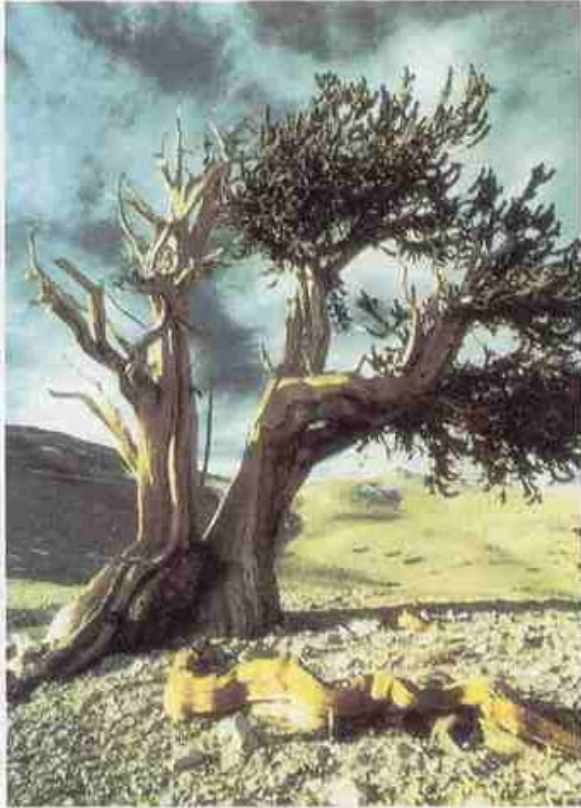
(*Citharexylum myrianthum*)

Verbenaceae

30 anos

4240

4210



***Pinus longaeva* - Pinaceae**

4900 anos de idade